

ORDINANCE # 181

**AN ORDINANCE RELATING TO THE REAPPORTIONMENT OF THE FOUR
MAGISTERIAL DISTRICTS IN OWEN COUNTY, KENTUCKY**

WHEREAS, now the magisterial districts are mapped off in four areas; and,

WHEREAS, the population difference in District 3 the largest district shows an over population of 274 people and District 2 the smallest district shows an under population of 238,

WHEREAS, KRS 67.045 requires the appointment of a reapportionment board after each ten year census and said reapportionment board having divided the district populations as follows:

DISTRICT I: 2,679

DISTRICT II: 2,662

DISTRICT III: 2,751

DISTRICT IV: 2,749

*NOW THEREFORE, BE IT ORDAINED BY THE OWEN FISCAL COURT
OF THE COUNTY OF OWEN, COMMONWEALTH OF KENTUCKY;*

THEREFORE the description of the geographic area of the four (4) magisterial districts listed in Attachment (1) shall become the magisterial districts of Owen County, Kentucky. All ordinances in conflict with the content of this ordinance are hereby repealed.

1st Reading 7/12/2011 e.k.

2nd Reading 8/9/2011 e.k.

On Motion of Casey Ellis and second by Teresa Davis
this ordinance is hereby adopted by the following vote:

District I yes
District II yes
District III yes
District IV yes
Judge yes

This 9th day of August, 2011.

Judge Carolyn Keith
OWEN JUDGE EXECUTIVE

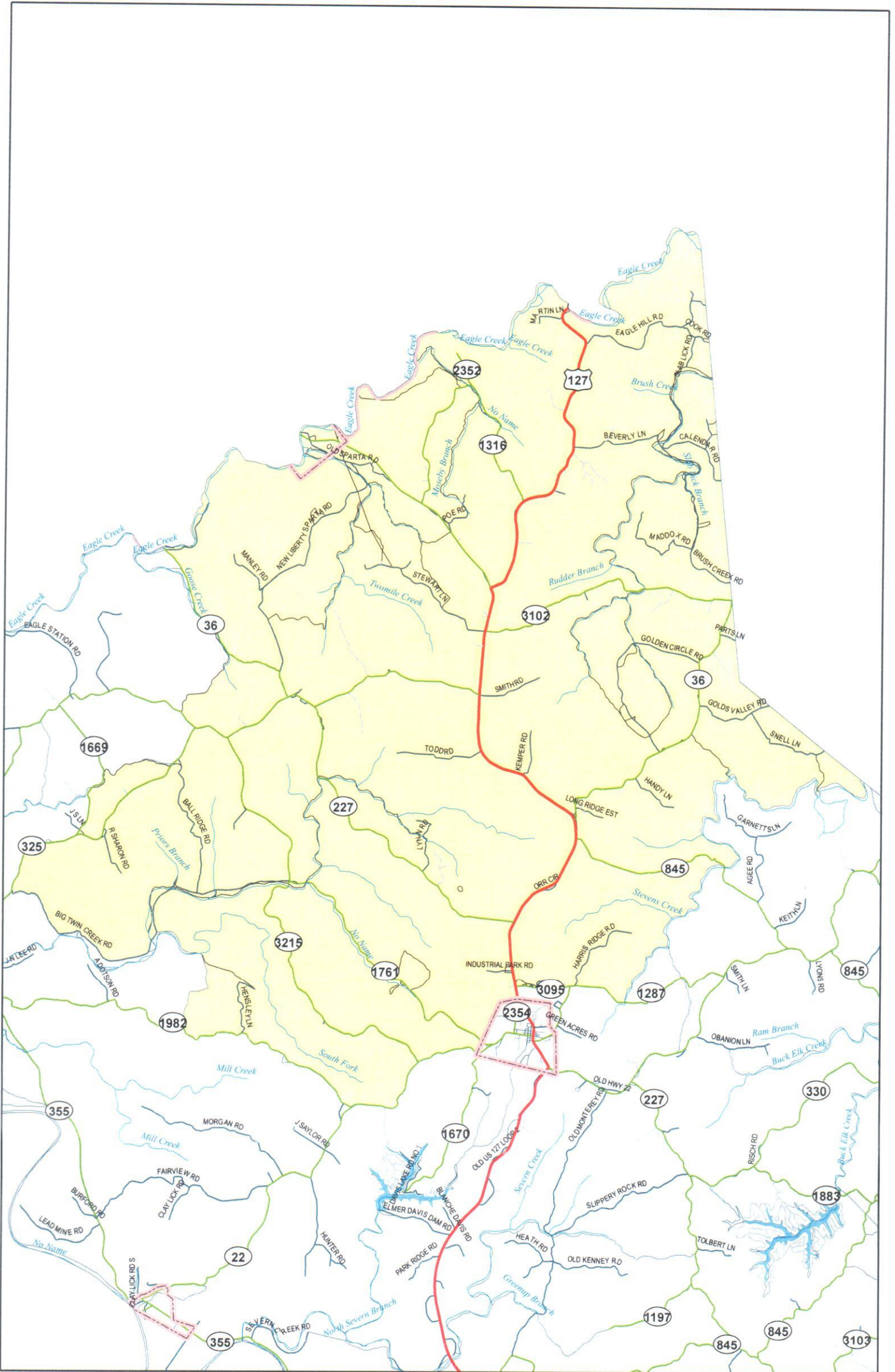
Description of Owen County Magisterial Districts

The following descriptions of the four (4) Magisterial districts were based upon mapping provided to this committee from the Northern Kentucky Area Development District. This mapping reflects population districts as determined in the 2010 decennial census of the United States, corporate limit lines for the city of Owenton, and various other information such as roadways, lakes, creeks, etc. These maps have been submitted as part of this report and shall be used as a reference if any clarification or visual inspection shall become necessary in order to establish the intent of the following descriptions.

District 1

1. Beginning at a point at the intersection of KY 36 and Owen/Carroll County line, following the northern border of the county in a northeasterly direction approximately 14.8 miles to the Grant County line.
2. Follow the Owen/Grant County line south approximately 9.6 miles to Stevens Creek.
3. Follow the creek in a southwesterly direction approximately 8.8 miles to KY 1287 (Old Sweet Owen Rd.)
4. Follow the centerline of KY 1287 westward until it meets KY 3095 (Howard Ellis Rd.) and continue westward until it meets the intersection of US HWY 127.
5. Follow US HWY 127 south to the corporate boundary of the City of Owenton.
6. Follow the corporate boundary of the City of Owenton westward then southward to the intersection of KY 22.
7. Follow the centerline of KY 22 westward approximately 2 miles to the intersection of KY 1982 (Squiresville Rd.)
8. Follow the centerline of KY 1982 in a northwesterly direction approximately 3.4 miles to an unnamed private drive.
9. Follow the unnamed private drive north to the end then east to a tributary of South Fork Creek.
10. Follow the tributary northward until it reaches South Fork Creek
11. Follow South Fork Creek westward until it reaches the centerline of Big Twin Creek Rd.
12. Follow the centerline of Big Twin Creek Rd in a westward direction until it reaches the intersection of KY 325.
13. Follow KY 325 in a northeasterly direction approximately 1.2 miles until it reaches the intersection of KY 1669.
14. Follow the centerline of KY 1669 approximately 0.8 miles until it reaches Little Twin Creek.
15. Follow Little Twin Creek in an eastwardly direction until it meets KY 325.
16. Follow the centerline of KY 325 in a northeastwardly direction approximately 0.7 miles until it intersects with KY 227.
17. Follow the centerline of KY 227 approximately 0.3 miles in a northwesterly direction until it reaches a private drive.
18. Follow the private drive north approximately 1.1 miles until it reaches Goose Creek.
19. Follow Goose Creek north approximately 0.3 miles until it reaches KY 36.
20. Follow the centerline of KY 36 north back to the beginning point.

District 1

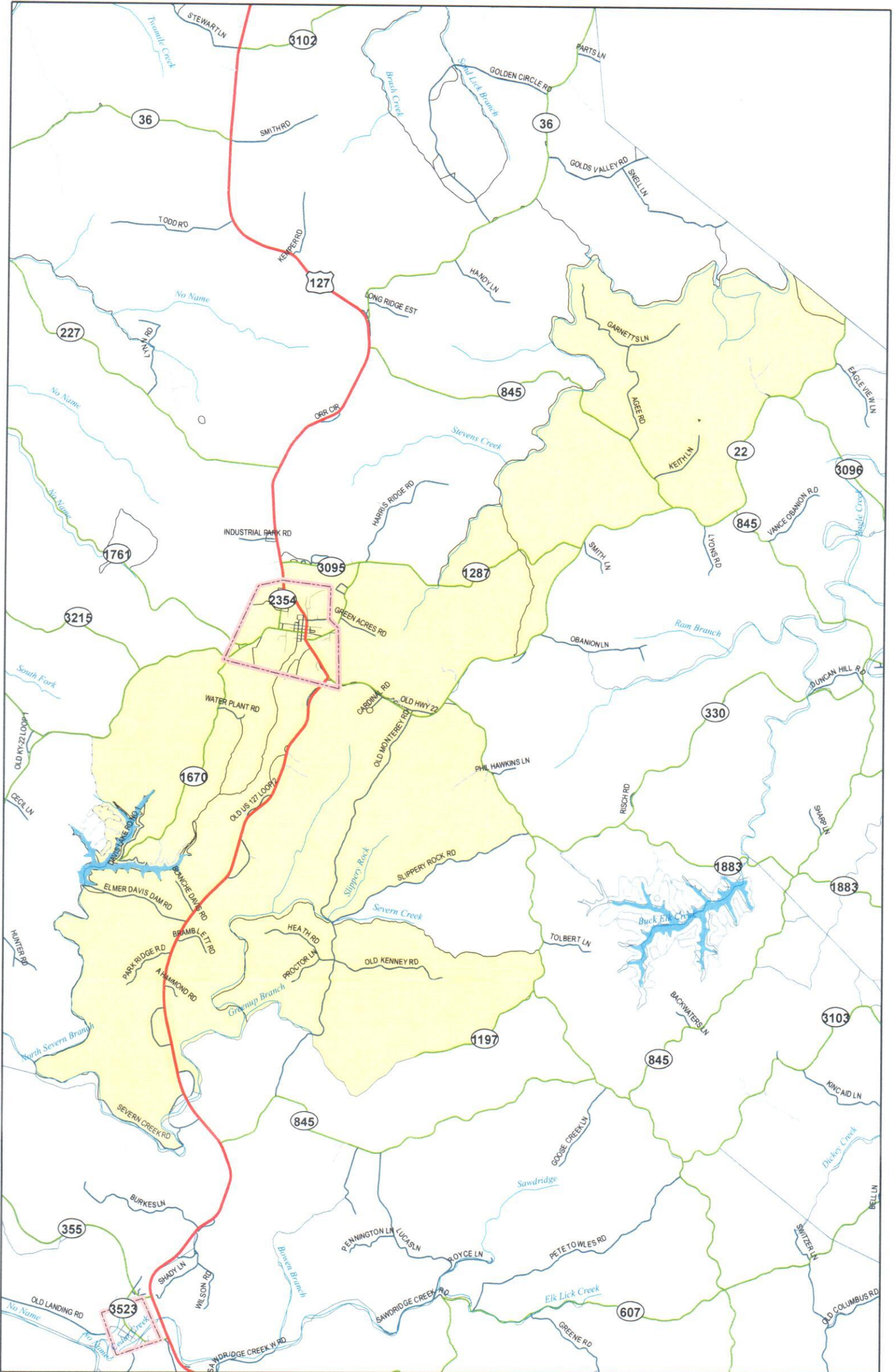


This map is provided as a general reference to the description above and should not be used for any other purpose. Please consult County Clerk for more information.

District 2

1. Beginning at a point on the Owen/Grant County line at Stevens Creek, following Stevens Creek in a southwesterly direction approximately 8.8 miles to KY 1287 (Old Sweet Owen Rd.)
2. Follow the centerline of KY 1287 westward until it meets KY 3095 (Howard Ellis Rd.) and continue westward until it meets the intersection of US HWY 127.
3. Follow US HWY 127 south to the corporate boundary of the City of Owenton.
4. Follow the corporate boundary of the City of Owenton westward then southward to the intersection of KY 22.
5. Follow the centerline of KY 22 westward approximately 2 miles to the intersection of Hide A Way Dr.
6. Follow the centerline of Hide A Way Dr to the shoreline of Elmer Davis Lake.
7. Follow the shoreline of Elmer Davis Lake in a counter-clockwise direction to the dam.
8. From the dam, follow North Severn Branch south approximately 3 miles to Severn Creek.
9. Follow Severn Creek in a southeasterly direction approximately 3 miles to Old US 127 Loop 6.
10. Follow the centerline of Old US 127 Loop 6 north to US 127.
11. Follow the centerline of US 127 north approximately 0.2 miles to the intersection of Old US 127 Loop 5.
12. Follow the centerline of Old US 127 Loop 5 south approximately 0.4 miles to Severn Creek.
13. Follow Severn Creek in a northeasterly direction approximately 1.5 miles to Greenup Branch.
14. Follow Greenup Branch east approximately 1.8 miles to the end of KY 1197 (Old Greenup Pike.)
15. Follow the centerline of KY 1197 to the intersection of KY 227 (Georgetown Rd.)
16. Follow the centerline of KY 227 north approximately 0.5 miles to Old El Bethel Church Rd.
17. Follow the Old Bethel Church Rd west to Severn Creek.
18. Follow Severn Creek west to Old Monterey Rd.
19. Follow the centerline of Old Monterey Rd north to Slippery Rock Rd.
20. Follow the centerline of Slippery Rock Rd. east to KY 227.
21. Follow the centerline of KY 227 north to KY 22.
22. Follow the centerline of KY 22 east approximately 7.6 miles to the Owen/Grant County line.
23. Follow Owen/Grant County line north to point of beginning.

District 2

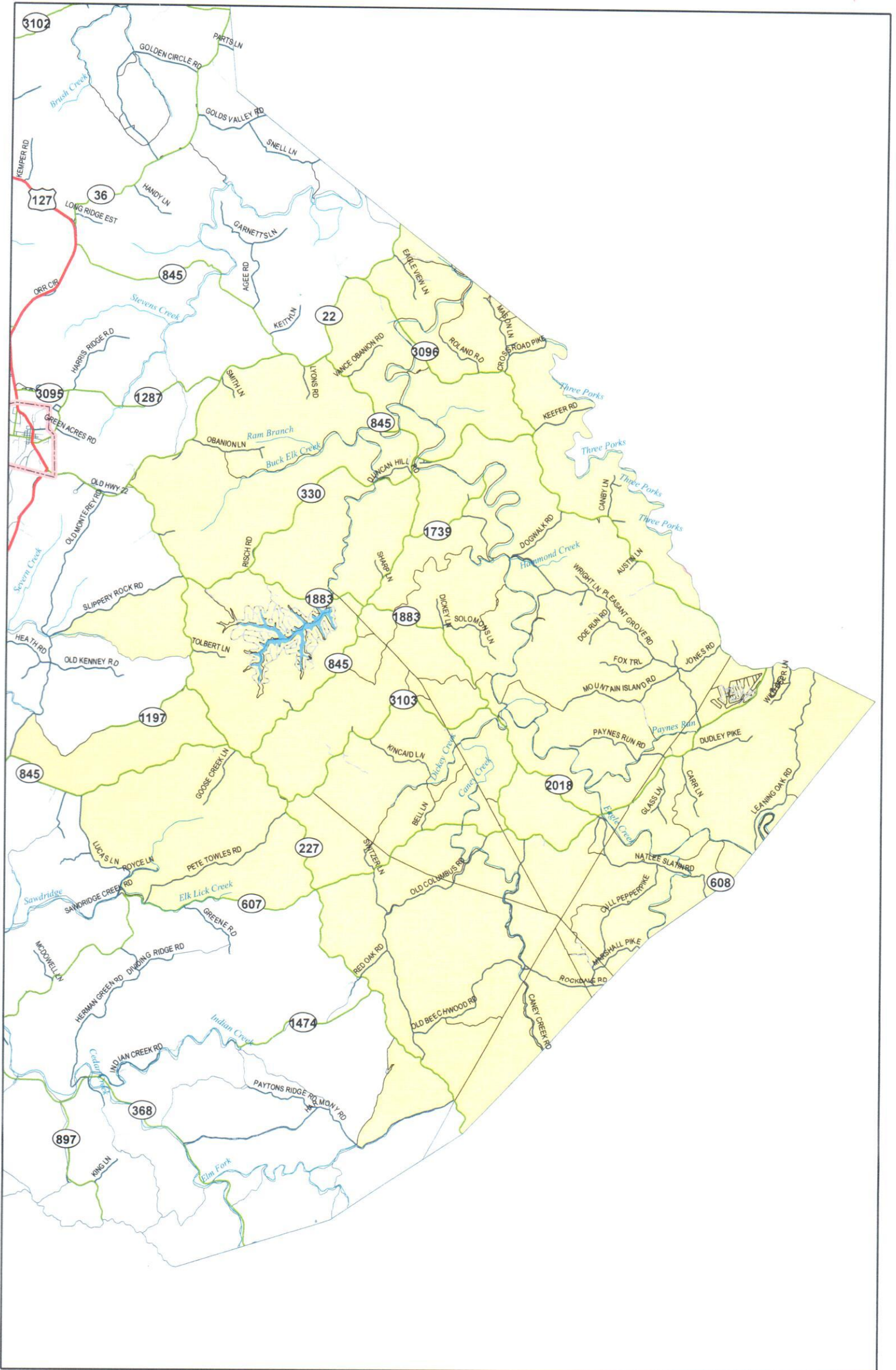


This map is provided as a general reference to the description above and should not be used for any other purpose. Please consult County Clerk for more information.

District 3

1. Beginning at a point on KY 22 on the Owen/Grant County line, follow the county line in southeasterly direction to the intersection of the Owen/Grant/Scott County line.
2. Follow the Owen/Scott County line in a southwesterly direction approximately 9.9 miles to the intersection of KY 227 (Georgetown Rd.)
3. Follow the centerline of KY 227 north to the intersection of Harmony Rd.
4. Follow the centerline of Harmony Rd. west approximately 1.8 miles to Elm Fork.
5. Follow Elm Fork in a northeasterly direction to a private drive that continues on to KY 227.
6. Follow the centerline of KY 227 north approximately 3.3 miles to the intersection of KY 607 (Claxon Ridge Rd.)
7. Follow the centerline of KY 607 west approximately 3.5 miles to the intersection of Sawdridge Creek Rd.
8. Follow the centerline of Sawdridge Creek Rd. west approximately 0.1 mile to the intersection of Lucas Ln.
9. Follow the centerline of Lucas Ln. north approximately 2.3 miles to the intersection of KY 845 (Greenup Rd.)
10. Follow the centerline of KY 845 west approximately 1.5 miles to the intersection of Old Monterey Rd.
11. Follow the centerline of Old Monterey Rd north approximately 0.9 miles to Greenup Branch.
12. Follow Greenup Branch east approximately 1.8 miles to the end of KY 1197 (Old Greenup Pike.)
13. Follow the centerline of KY 1197 to the intersection of KY 227 (Georgetown Rd.)
14. Follow the centerline of KY 227 north approximately 0.5 miles to Old El Bethel Church Rd.
15. Follow the centerline of Old El Bethel Church Rd west to Severn Creek.
16. Follow Severn Creek west Old Monterey Rd.
17. Follow the centerline of Old Monterey Rd to Slippery Rock Rd.
18. Follow the centerline of Slippery Rock Rd. east to KY 227.
19. Follow the centerline of KY 227 north to KY 22.
20. Follow the centerline of KY 22 east approximately 7.6 miles to point of beginning at the Owen/Grant County line.

District 3

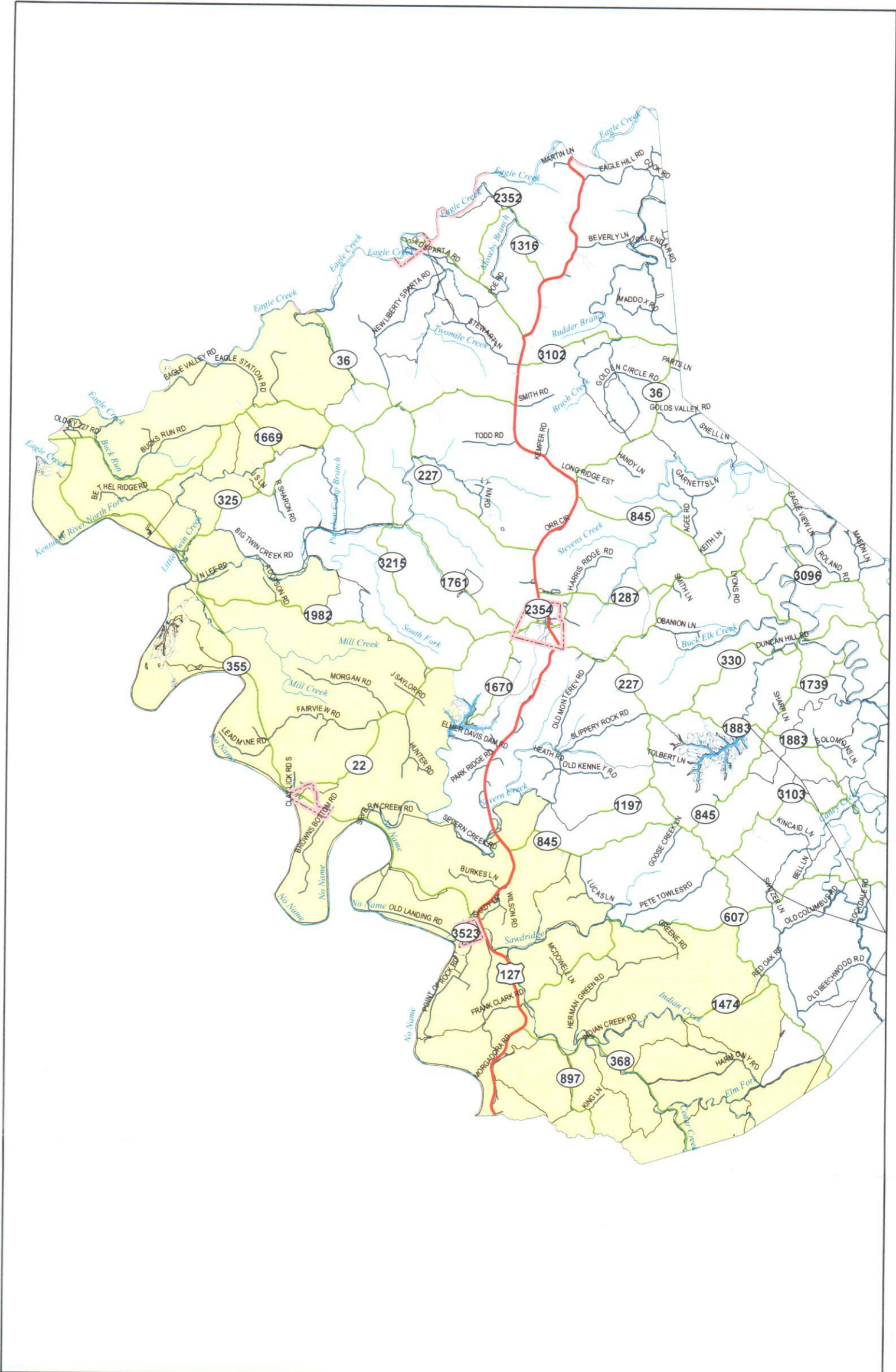


This map is provided as a general reference to the description above and should not be used for any other purpose. Please consult County Clerk for more information.

District 4

1. Beginning at a point at the intersection of KY 36 and Owen/Carroll County line, follow the centerline of KY 36 south approximately 2.1 miles.
2. Follow Goose Creek in a southwesterly direction approximately 0.8 miles to an unnamed private drive.
3. Follow the private drive to intersection of KY 227.
4. Follow the centerline of KY 227 in a southeasterly direction approximately 0.3 miles to the intersection of KY 325.
5. Follow the centerline of KY 325 in a southwesterly direction approximately 0.7 miles to Little Twin Creek.
6. Follow Little Twin Creek in a southwesterly direction approximately 1.2 miles to KY 1669.
7. Follow the centerline of KY 1669 southward to the intersection of KY 325.
8. Follow the centerline of KY 325 in a southwesterly direction approximately 1.2 miles to the intersection of Big Twin Creek Rd.
9. Follow the centerline of Big Twin Creek Rd. in a southeasterly direction approximately 3.2 miles to South Fork.
10. Follow South Fork eastward approximately 0.9 miles to a south flowing tributary.
11. Follow the tributary south approximately 0.6 miles then west to the end of an unnamed private drive.
12. Follow the private drive south to the intersection of KY 1982 (Squiresville Rd).
13. Follow the centerline of KY 1982 east approximately 3.4 miles to the intersection of Hide A Way Dr.
14. Follow the centerline of Hide A Way Dr to the shoreline of Elmer Davis Lake.
15. Follow the shoreline of Elmer Davis Lake in a counter-clockwise direction to the dam.
16. From the dam, follow North Severn Branch south approximately 3 miles to Severn Creek.
17. Follow Severn Creek in a southeasterly direction approximately 3 miles to Old US 127 Loop 6.
18. Follow the centerline of Old US 127 Loop 6 north to US 127.
19. Follow the centerline of US 127 north approximately 0.2 miles to the intersection of Old US 127 Loop 5.
20. Follow the centerline of Old US 127 Loop 5 south approximately 0.4 miles to Severn Creek.
21. Follow Severn Creek in a northeasterly direction approximately 1.5 miles to Greenup Branch.
22. Follow Greenup Branch east approximately 1.0 miles to Old Monterey Rd.
23. Follow the centerline of Old Monterey Rd. south to the intersection of KY 845 (Greenup Rd.)
24. Follow the centerline of KY 845 east to the intersection of Lucas Ln.
25. Follow the centerline of Lucas Ln. south to the intersection of Sawdridge Creek Rd.
26. Follow the centerline of Sawdridge Creek Rd. east approximately 0.1 mile to KY 607 (Calxon Ridge Rd.)
27. Follow the centerline of KY 607 east to KY 227 (Georgetown Rd.)
28. Follow the centerline of KY 227 south approximately 3.3 miles to a private drive.
29. Follow the private drive in a southwesterly direction to Elm Fork.
30. Follow Elm Fork in a southwesterly direction to Harmony Rd.
31. Follow the centerline Harmony Rd. east to the intersection of KY 227.
32. Follow KY 227 south to the Owen/Scott County line.
33. Follow the county line west to the Kentucky River.
34. Follow the county line north to the Owen/Henry/Carroll County line.
35. Follow the Owen/Carroll County line east to the point of beginning.

District 4



This map is provided as a general reference to the description above and should not be used for any other purpose. Please consult County Clerk for more information.